

= Newhouse =

2 ROW GARLIC DIGGER

Visit Our Web Site: www.newhouse-mfg.com



= THE MOST EFFICIENT WAY OF DIGGING YOUR GARLIC =

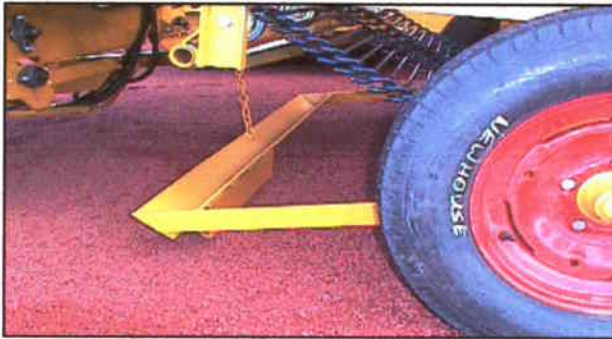


DIGGING WITH CROSS-FEED IN OUTER END DISCHARGE POSITION AND PLACING GARLIC ON TOP OF PREVIOUS DUG ROW, THUS MAKING 4 ROWS INTO 1.



DIGGING 2 ROWS AND DEPOSITING THE GARLIC THROUGH THE CENTER OPENING BETWEEN THE 2 OPPOSING BELTS.

NEWHOUSE GARLIC DIGGER



GROUND LEVELING AND BEDDING BAR: DROPS TO THE GROUND WHEN BLADES ARE LOWERED.



CROSS FEED EXTENSION SECONDARY BELT MOVES IN OR OUT WITH REMOTE CONTROL FROM TRACTOR TO PUT FOUR ROW TOGETHER.



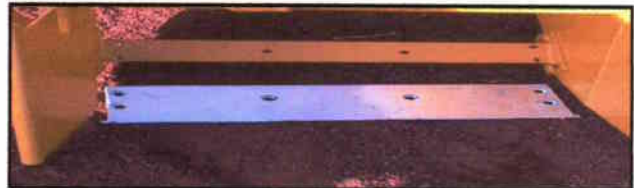
BLADES ARE LIFTED/LOWERED SIMULTANEOUSLY WITH CONTROL FROM THE TRACTOR.



CROSS-FEED ADJUSTABLE FOR PREFERENCE OF GARLIC ROW LOCATION.



RUBBER PADDLE WHEEL ASSISTS GARLIC ONTO CONVEYER CHAIN.



REPLACEABLE BOLT-ON ALLOY DIGGER



ADJUSTABLE WHEELS: WHEELS ARE ADJUSTABLE VERTICAL AND HORIZONTALLY FOR LEVELING AND ROW WIDTHS.

— SPECIFICATIONS —

PRIMARY CHAINS	7/16 X 25
CROSS FEED BELTS WIDTH	20 IN
P. T. O.	540 RPM
FRICITION SLIP CLUTCH	1
ADJUSTABLE SPEED CONTROL	1
ANTI CREEP CONTROL	1
RIGHT ANGLE GEAR BOX	1
OVER ALL WIDTH	93 INCHES
OVER ALL LENGTH	19 FEET
WEIGHT	LBS.
WHEELS	15 X 5
TIRES	F7.8-15

NEWHOUSE
MANUFACTURING CO., INC.

1048 N. SIXTH STREET
NORTH HWY. 97
REDMOND, OREGON 97756
PHONE: 541-548-1055 FAX: 541-548-4144
E-mail: info@newhouse-mfg.com