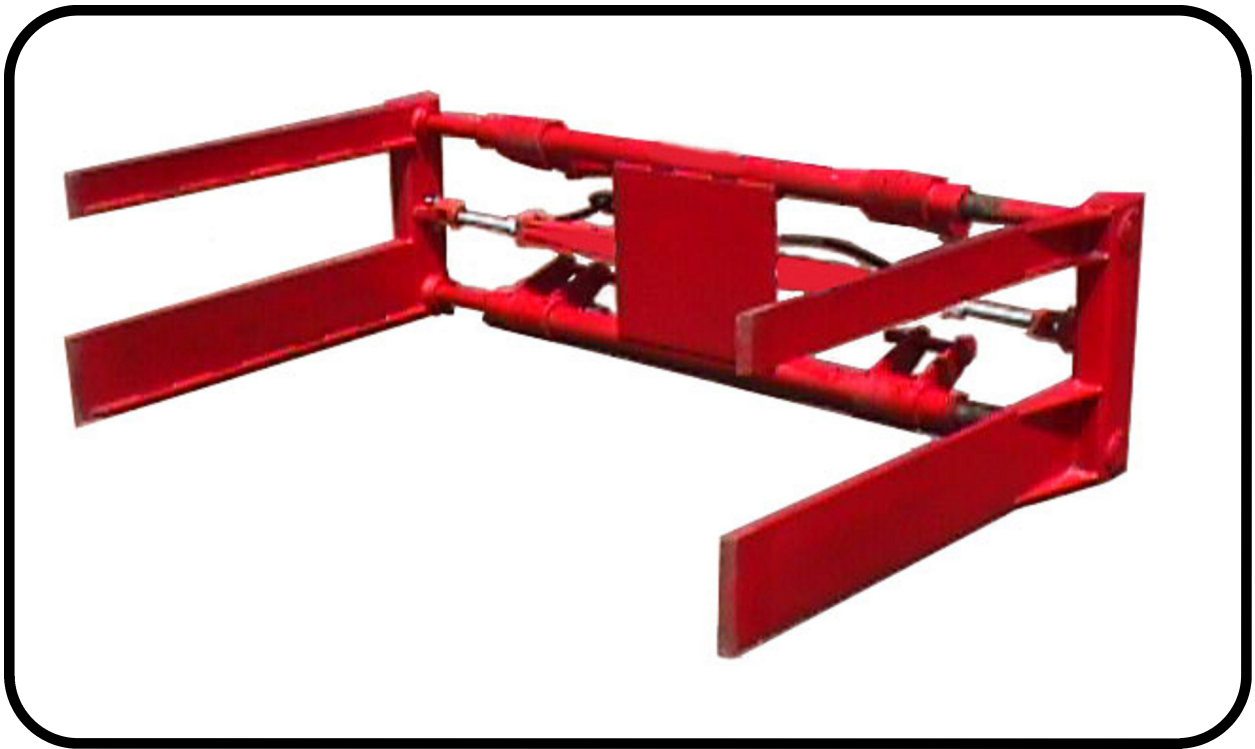


NEWHOUSE 8 & 10 BALE SQUEEZE UNITS COMES COMPLETE WITH UNIVERSAL MOUNTING BRACKETS FOR MANY MAKES OF LOADERS



BALE SQUEEZE SIDE ARMS ARE MADE OF 3/4" HIGH TENSILE STEEL. THIS PROVIDES GREAT STRENGTH. THE NARROW 3/4" ARMS WILL MAKE A TIGHTER STACK WITH VERY LITTLE GAP BETWEEN ADJACENT BALE, ALSO HANDY WHEN RETRIEVING FROM A TIGHT STACK



THIS PICTURE SHOWS THE REAR VIEW OF THE SQUEEZE, SHOWING THE CYLINDERS AND UNIVERSAL LOADER MOUNTING BRACKETS



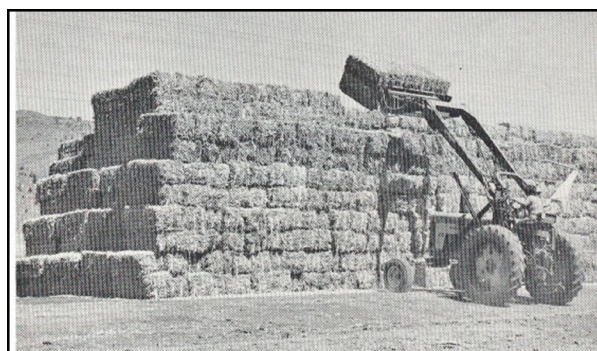
SQUEEZE CAN BE CHANGED FROM AN 8 TO 10 BALE (OR VICE VERSA) BY REMOVING OR ADDING CYLINDER EXTENSIONS, AND SHORTENING OR REPLACING SLIDE BARS.



HOOK UP BRACKETS FOR LOADER ARE VERY UNIVERSAL. THE BRACKETS SLIDE ON A HEAVY KEYED TUBING FOR ANY WIDTH, TURN OVER FOR VERTICAL SPACING IF NECESSARY. THE BRACKETS ARE ALSO 2 PIECES SO SPACING CAN BE SET FOR LOADER ARM WIDTH.

= **NEWHOUSE** =
MANUFACTURING COMPANY

THE NEWHOUSE BALE SQUEEZE ALSO HANDLES LARGE BALES WITH EASE



**FAST, E-Z unloading from truck to hay stack or loading from hay stack to truck,
with a Newhouse Bale Squeeze**

SPECIFICATIONS					
ALL MEASUREMENTS ARE APPROXIMATED	WT. APPRO	I.D. OPEN	I.D. CLOSED	O.D. OPEN	O.D. CLOSED
8 BALE SQUEEZE	760	88"	57"	93"	62"
10 BALE SQUEEZE	790	105"	72"	110"	77"
HYDRAULIC CYLINDER					
	2@ 2" X 16"				
OA HEIGHT	22-1/4"				
OA LENGTH	46-3/4"				
TOP SQUEEZE ARM	3/4" X 4" HIGH TENSILE STEEL				
BOTTOM SQUEEZE ARM	3/4" X 8" HIGH TENSILE STEEL				

NEWHOUSE MFG. CO., INC.
1048 N. 6th STREET
REDMOND, OREGON 97756
 PHONE: (541) 548-1055
 1-800-587-1055
 FAX: (541) 548-4144
 Web site: www.newhouse-mfg.com
 E-mail: info@newhouse-mfg.com